

Iwona Klonowska \*, Jadwiga Stawnicka \*\*

University of Białystok, [iwonaklonowska76@interia.pl]

Academy of Physical Education in Katowice [jadwigastawnicka@wp.pl]

## Socio-pedagogical activities of the Police for internal security from the perspective of the functioning of the National Safety Risk Map

**Abstract:** The article describes the functioning of the National Safety Risk Map – an important element of the process of public safety management by the Polish Police, indicates the functioning of this tool and discusses the results of own research on the evaluation of the Safety Risk Map by the residents of Katowice. The results were compared with national studies. The Map is one of the channels of communication between the Police and the society, called by the author “the phenomenon of communication” because of the number of people using the Map and its functionality.

**Keywords:** Public safety, National Safety Risk Map, Police, community policing.

### Introduction

In the times of scientific and technical, geopolitical and intellectual developments, changing the forms and ways of our lives and our environment, the Police – as one of the key institutions responsible for ensuring public safety and order, by integrating into this reality, verifies its existing relations with the community and sets new objectives in this area. The observed turn of the Police towards civil society is visible, for example, in the formulation of the mission and vision of the Police through the implementation of the priorities of the Chief of Police for the years 2016–2018 (valid until 2020), which assume increasing

the effectiveness of the Police's activities for strengthening cooperation with the society and strengthening pro-social activities within the framework of cooperation between the Police and non-governmental organizations and associations.

As part of the activities of the Polish Police and conducting a dialog for safety with citizens, one should mention, among others, activities related to the restoration of the stations, implementation of the program "District police patrol closer to us" and the inauguration of the national program "National Safety Risk Map" on 13 June 2016 in Pruszków<sup>1</sup>. The National Safety Risk Map was launched in July 2016 as a pilot project in three police garrisons: in Podlaskie and Pomorskie voivodeships and in the capital city, and in October 2016 it was introduced throughout the country, with the implementation preceded by public consultations, attended by more than 217 thousand people all over Poland<sup>2</sup>.

The aim of this article is to present the results of research concerning the evaluation of the perception of the functioning of the tool that is the National Safety Risk Map by its users (citizens), preceded by a short presentation of the tool itself, as well as to indicate areas and platforms for lasting partnership in building security through localization, identification and elimination of crime-inducing factors. The NSRM is one of the channels of communication between the Police and the society, called by the author "the phenomenon of communication" because of the number of people using the map.

## The National Safety Risk Map as a form of dialog between the Police and local communities

Conducting a dialog between the Police and the society within the framework of the National Safety Risk Map is realized by: collecting information obtained from police information systems; acquiring information in the course of direct contacts with citizens, representatives of local government or non-governmental organizations; 3. providing information by residents during social debates devoted to public safety. The dialogical function of the National Safety Risk Map is manifested by the possibility for residents to anonymously report signals about the risks via the Internet and by the response of the Police to these reports, i.e. verification of each message sent by the citizen and the possibility for the citizen to monitor these responses. Thanks to the information obtained from the citizens,

.....

<sup>1</sup> The functioning of the National Safety Risk Map is discussed in the book: by J. Stawnicka and I. Klonowska *Krajowa Mapa Zagrożeń Bezpieczeństwa nową formą dialogu polskiej Policji ze społecznością lokalną na rzecz bezpieczeństwa wewnętrznego [National Safety Risk Map as a new form of dialog for internal security between the Polish Police and the local community – in the socio-pedagogical aspect]* (Sosnowiec 2018).

<sup>2</sup> Regarding the role of public consultation in the construction of areas presented on the safety risk maps see: Stawnicka, Klonowska 2018, pp. 49–81.

the Police can use their forces and resources more rationally, and better plan the officers' work. The National Safety Risk Map is an IT application consisting of two parts. The first is statistical data of crimes and offences, which are presented in visual form and divided into individual voivodeships, districts and municipalities, and the second – an interactive tool that allows citizens to mark threats on it. The National Safety Risk Map is a list of specific, most frequent threats to human life and health, property and public order, taking into account the temporal and spatial distribution of threats that have a significant impact on the sense of security in society<sup>3</sup>.

The map of threats presented 25 categories, including e.g. vandalism, homelessness, dangerous places in water areas, illegal car raids, illegal parking, unguarded pedestrian railway crossing, inadequate road infrastructure, destroying greenery, speeding, consumption of alcohol in forbidden places, drownings, using drugs, bad traffic organization, begging. In this way, the catalog of values subject to protection was extended and new functionalities were introduced, which are to increase the efficiency of the Police in terms of verification and elimination of threats reported by the society. The functioning of the National Safety Risk Map is a testimony to the enrichment of the dialog between the Police and the society with modern solutions in the field of technology and interpersonal communication. At present, traditional methods and forms of work (direct conversation with a citizen, interventions, patrolling the streets) are not sufficient<sup>4</sup>.

As part of the dialog between the Police and the public, it makes it possible to present to the citizen the scale and type of threats occurring. The map allows for the efficient management of public security in inter-institutional cooperation and allows for the optimal use of manpower and resources for the performance of duties by institutions responsible for public security and order. The dialog between the local community and the Police triggers the activity and responsibility of citizens in the area of public safety and order, and tightens contacts between local communities with the district police patrol, and it is the citizens who become a source of information about incidents requiring police response. The map is also a tool for diagnosing social problems, because social debates are used to discuss the most important problems diagnosed thanks to the National Safety Risk Map and social prevention projects are designed to respond to the diagnosed security threats.

.....

<sup>3</sup> <http://www.policja.pl/pol/mapa-zagrozen-bezpiecze/33880,dok.html>

<sup>4</sup> Among the legal acts regulating the functioning of the National Safety Risk Map there are: Ordinance No. 768 of the Chief of Police of 14 August 2007 on methods and forms of performing tasks by police officers on patrol duty and coordination of preventive activities (hereinafter referred to as Ordinance No. 768); Guidelines No. 3 of the Chief of Police of 14 September 2016 on the procedure to be followed by police officers in performing tasks related to the functioning of the National Safety Risk Map; Guidelines No. 1 of the Chief of Police of 31 July 2017 amending the guidelines on the procedure to be followed by police officers in performing tasks related to the functioning of the National Safety Risk Map

## Discussion of the research results

Research on the evaluation of the functioning of the National Safety Threats Map was carried out from January to April 2019 as part of a project conducted with the internal security students at the Jerzy Kukuczka Academy of Physical Education in Katowice. The persons conducting the survey received a unified tool<sup>5</sup> and the research involved the following cities: Cieszyn<sup>6</sup>,

— Katowice<sup>7</sup>,

— Koszęcin<sup>8</sup>,

— Mikołów<sup>9</sup>,

.....

<sup>5</sup> The authors of the tool were I. Klonowska and J. Stawnicka.

<sup>6</sup> The survey was conducted by a student of the Jerzy Kukuczka Academy of Physical Education in Katowice – Marek Kłoda (202 respondents). Among the respondents there were 100 (45.5%) women and 120 (54.5%) men. The largest group were people up to 25 years old – 29 (45%), followed by 26 to 30 years old – 53 (24%), 31 to 35 years old – 25 (11%), 36 to 40 years old – 15 (7%), over 45 years old – 18 (8%), and the least numerous group were respondents aged 41 to 45 years old – 10 (5%). 72 people had secondary education (33%), 52 people (24%) had higher bachelor's degree, the same percentage, 53 people, had vocational education (24%), while 28 people had a master's degree (13%) and 15 (7%) – primary education. The most numerous group turned out to be the employed (102 people, 46%), followed by students (85, 39%), retirees and pensioners (18, 8%) and the unemployed (15, 7%).

<sup>7</sup> The survey in Katowice was conducted by the authors of the article (356 respondents), 64% men and 36% women. The largest group consisted of respondents aged 31–40 years (38%), followed by respondents aged 41–50 years (22%). The third place was taken by respondents aged 51–60 (14%), while the group of respondents aged over 60 (12%) was two percentage points smaller, and 21–30 (10%). The smallest group were respondents under 20 years of age (4%). In terms of their education it should be noted that these were respondents with secondary education (41%), with higher education (32%). The largest group of respondents were people with primary education – high school students (98%), while the rest (2%) were people with a master's degree. Among the respondents, all of them were residents of a city with more than 100,000 residents.

<sup>8</sup> The survey was conducted by Bartłomiej Pilarski, a student of the Academy of Physical Education in Katowice, and the number of respondents was 530 people, 200 of whom confirmed that they were familiar with the National Safety Risk Map, which is 37% of the respondents. Among the respondents 71 (35.5%) were women and 129 (64.5%) men. The most numerous group of respondents were people aged 26–30 (72 36%). Slightly fewer respondents (61) were between 31–35 years old (31%) and up to 25 years old (52), which constituted 26%. The group of people aged 36–40 consisted of 11 people, which constituted 6%. Among the respondents, only one person was aged 41–45 and over 45 (1%). Among the surveyed 100% of the people were rural residents. In terms of education, the largest group of respondents (122) are those with secondary education (61%). Next in terms of numbers are people with primary education and it was 41 people (20.5%) and 32 people with basic vocational education (16%). The two smallest groups are people with a bachelor's degree – 4 people, which constituted 2%, and people with a master's degree – one person (0.5%). In terms of social status, the largest group – almost three quarters (74.5%) of all – are the employed (149 people). The second place (44 people) is occupied by school/university students (22%). The last two groups are the unemployed (4 respondents and 2% of respondents) and retirees and pensioners (33 people and 1.5% of respondents).

<sup>9</sup> The survey was conducted by Dariusz Gawor, a student of the Humanitas University. The vast majority of the respondents were men – 231 people (77%), whereas women in the studied group

- Mysłówice<sup>10</sup>,
- Siemianowice Śląskie<sup>11</sup>
- Wodzisław Śląski<sup>12</sup>.

amounted to 69 (23%). The largest group were people between 26 and 30 years old (123 people, i.e. 41%), followed by people between 31 and 35 years old (57 people, i.e. 19%), followed by people under 25 years old (36 people, 12%) and 36-40 years old (36 people, 12%), 41-45 years old (27 people, i.e. 9%), and the least numerous group were people over 45 years old (21 people, i.e. 7%). The vast majority of people had a master's degree (189 people, i.e. 63%), slightly less people had a bachelor's/engineer's degree (72 people, i.e. 24%). The smallest group were those with vocational education (39 persons, i.e. 13%). None of the respondents possessed only secondary or primary education. The largest group were the employed (216 people, i.e. 72%), there were slightly fewer students (45 people 15%), and the fewest declared that they were unemployed (39 people, i.e. 13%).

<sup>10</sup> In Mysłówice, the survey was carried out on 293 people, of whom 200 respondents were selected who positively answered that they have used the National Safety Risk Map. The survey was conducted by student Bartosz Labryga from the Academy of Physical Education in Katowice. The most numerous group of the respondents were men – 120 people (60%), women – 80 people (40%). The dominant group of the respondents are respondents up to the 25 years old – 108 people (54%), followed by respectively people aged 31–35 – 32 people (16%), 26–30 – 20 people (10%), 36–40 – 18 people (9%), over 45 – 12 people (6%), the least numerous group were people aged 41–45 – 10 people (5%). The largest number of respondents participating in the survey declare that they have secondary education – 90 people (45%), followed by people with a bachelor's degree – 40 (20%), a master's degree – 36 people (18%), people with basic vocational education – 34 people (17%), no person has primary education – 0 people (0%). As far as the social status of the respondents is concerned, the most dominant group are employed people – 102 (51%), then school/university students – 88 (44%), the least numerous groups are retirees/retired people – 6 (3%), and the unemployed – 4 (2%). All the surveyed persons in the number of 200 responded that they live in a city with 20 to 100 thousand residents.

<sup>11</sup> Survey conducted by Paweł Gwóźdź from the Academy of Physical Education in Katowice. The number of respondents was 200 people, 53.1% of whom were young people, i.e. up to 25 years old. The retired constituted a small percentage among the respondents. Out of 284 respondents, 95 (34%) were women and 189 (66%) were men. The most numerous age group consisted of people under 25 years old. There were 101 of them (36%). The lowest number of answers in the questionnaires was obtained from the residents of Siemianowice Śląskie, who were over 45 years old. There were only 11 such respondents (4%) There were 65 (23%) residents in the 26–30 age group; 31–35 – 51 (18%); 36–40 – 32 (11%); 41–45 – 24 (8%). In the surveyed population the largest group were people with secondary education – 121 respondents (43%). 52 (18%) of the respondents had primary education, 60 (21%) people graduated from basic vocational school, while 31 (11%) of the respondents received a bachelor's degree, and 20 (7%) have a master's degree. A large number of respondents were school/university students. There were as many as 110 (39%) of them. People with permanent employment amounted to 108 (38%). The number of declared unemployed people was 37 (13%), while pensioners represented.

<sup>12</sup> The survey was conducted by Karolina Kaczyna, a student of the Academy of Physical Education in Katowice. The questionnaires were completed by 232 people, 124 of whom were women and 108 men. The main group of respondents were residents of Wodzisław Śląski aged 36-45 (30%), 28% of them were people aged 41–45, 15% – over 45, 12% – 26–30, and the least numerous were those aged up to 25 (7%) and 31–35. Among the respondents, the largest number of people, as much as 43.1%, were people from a city of 20 to 100 thousand residents. The vast majority of the respondents (59%) had secondary education, the next groups were those with a bachelor's degree – 17% and those with a basic vocational education – 14%. 7 % of the surveyed had a master's degree, and 3% had primary education. The largest number of respondents were the employed (69%), followed by the unemployed (16%), retirees constituted 10% and school and university students – 5%.

The discussion of the results of the research in this article includes an indication of similarities and differences in the answers of the respondents in different cities of the Śląskie Voivodeship, where the research among the users of the National Safety Risk Map was carried out, including the areas:

- Overall assessment of the National Safety Risk Map
- Frequency of use of the National Safety Risk Map
- Purpose of visiting the National Safety Risk Map website
- Positive and negative features of the National Safety Risk Map
- Source of information about the National Safety Risk Map
- The impact of the National Safety Risk Map on increasing the level of the sense of security
- The impact of the National Safety Risk Map on the effectiveness of the Police

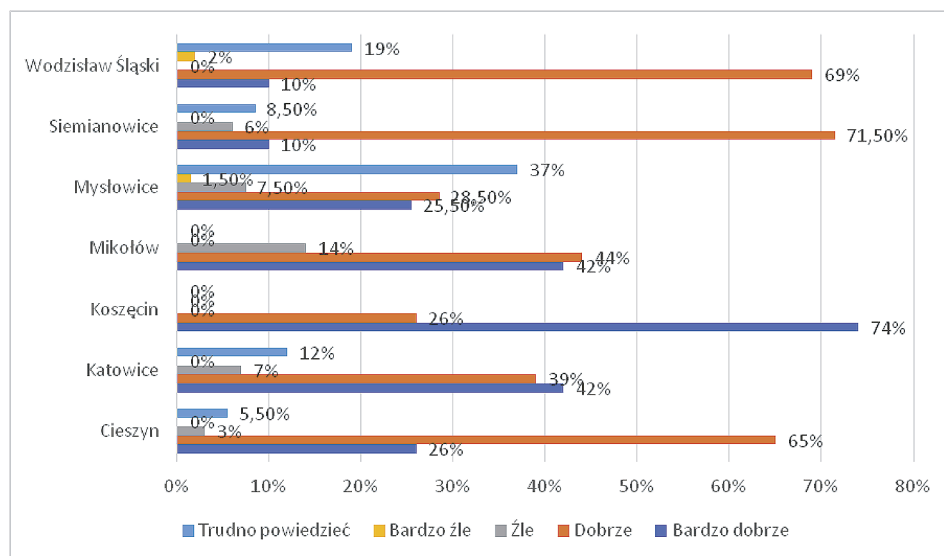
## Overall assessment of the National Safety Risk Map

Responding to a question on the overall assessment of the National Safety Risk Map (*How do you generally assess the National Safety Risk Map as an application?*) the answer “very good” was given by almost three quarters of respondents in Koszęcin (74%), the same percentage (42%) of residents in Katowice and Mikołów, slightly more than a quarter of residents of Cieszyn (26%), and half a percentage point less of respondents in Mysłowice (25.5%), and “good” by 71.5% of respondents in Siemianowice, 60% in Wodzisław Śląski, 65% in Cieszyn and 44% in Mikołów. Less than 40% of respondents rated the Map in Katowice (39%), Mysłowice (28.5%) and Koszęcin (26%). The National Safety Risk Map was assessed as “bad” by 14% of respondents in Mikołów, 7.5% in Mysłowice, 7% in Katowice, 6% in Siemianowice and 3% in Cieszyn. None of the respondents in Koszęcin and Wodzisław Śląski assessed the Map as “bad”. The respondents from Wodzisław Śląski (2%) and Mysłowice (1.5%) assessed the National Security Threats Map as “very bad”. None of the respondents from Cieszyn, Katowice, Koszęcin, Mikołów and Siemianowice assessed the Map as “very bad”. A significant number of respondents in Mysłowice (37%), Wodzisław Śląski (19%) and Katowice (12%), Siemianowice (8.5%) and Cieszyn (5.5%) answered “Hard to say”. None of the participants in Koszęcin and Mikołów gave such an answer.

Table 1. Answers to the question *How do you generally assess National Safety Risk Map as an application?*

	Very good	Good	Bad	Very bad	Hard to say
Cieszyn	26%	65%	3%	0%	5.5%
Katowice	42%	39%	7%	0%	12%
Koszęcin	74%	26%	0%	0%	0%

	Very good	Good	Bad	Very bad	Hard to say
Mikołów	42%	44%	14%	0%	0%
Mysłowice	25.5%	28.5%	7.5%	1.5%	37%
Siemianowice	10%	71.5%	6%	4%	8.5%
Wodzisław Śl.	10%	69%	0%	2%	19%



Trudno powiedzieć – Hard to say, Bardzo źle – Very bad; Żle – Bad; Dobrze – Good; Bardzo dobrze – Very good

Graph 1. Answers to the question *How do you generally assess the National Safety Risk Map as an application?*

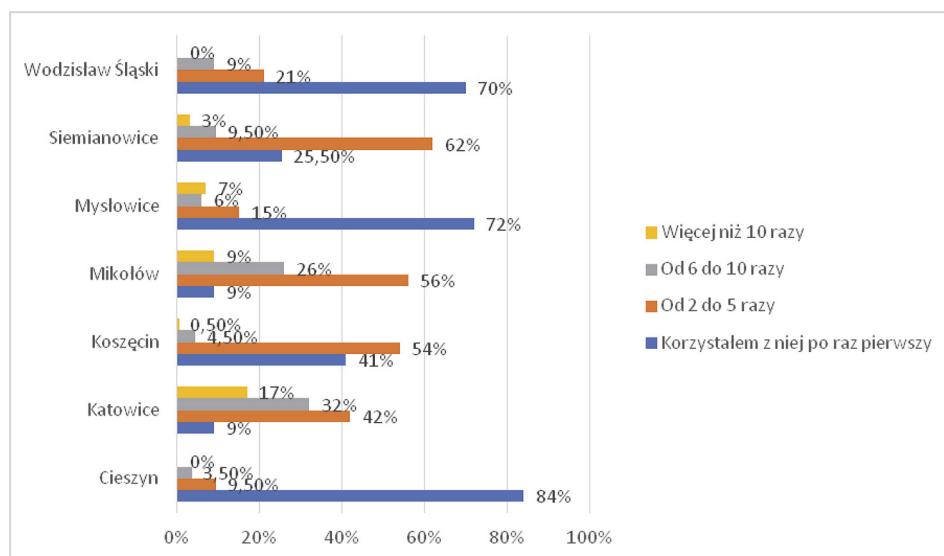
## Frequency of use of the National Safety Risk Map

The number of respondents using the National Safety Risk Map for the first time was 84% in Cieszyn, only 9% in Katowice, almost three fourths of the respondents (72%) used it for the first time in Mysłowice, 70% in Wodzisław Śląski, 41% in Koszęcin, one fourth of the respondents in Siemianowice – 25.5%, and only 9% in Katowice and Mysłowice (almost every tenth respondent). The Map was used 2 to 5 times by 62% of the surveyed in Siemianowice, as well as over half of them in Mikołów (56%) and Koszęcin (54%). Less than half of the respondents used the Map in Katowice (42%) and half the percentage less in Wodzisław Śląski (21%). The lowest percentage of respondents who used the Map

2 to 5 times was in Mysłowice (15%) and Cieszyn (9.5%). The Map was used from 6 to 10 times by almost one third of respondents in Katowice (32%), slightly more than one fourth in Mikołów (26%), in Siemianowice (9.5%), in Wodzisław Śląski 9%. The lowest percentage of respondents who used the Map 6 to 10 times was in Mysłowice (6%), in Koszęcin (4.5%) and in Cieszyn (3.5%). The National Safety Risk Map application was used more than 10 times by 17% of respondents in Katowice, 9% in Mikołów, 7% in Mysłowice, only 3% in Siemianowice and 0.5% in Koszęcin. None of the respondents used the application more than 10 times in Cieszyn and Wodzisław Śląski.

Table 2. Answers to the question *How often do you use the National Safety Risk Map?*

	I used it for the first time	2 to 5 times	6 to 10 times	More than 10 times
Cieszyn	84%	9.5%	3.5%	0%
Katowice	9%	42%	32%	17%
Koszęcin	41%	54%	4.5%	0.5%
Mikołów	9%	56%	26%	9%
Mysłowice	72%	15%	6%	7%
Siemianowice	25.5%	62%	9.5%	3%
Wodzisław Śl.	70%	21%	9%	0%



Więcej niż 10 razy – More than 10 times; Od 6 do 10 razy – 6 to 10 times; Od 2 do 5 razy – 2 to 5 times; Korzystałem z niej po raz pierwszy – I used it for the first time

Graph 2. Answers to the question *How often do you use the National Safety Risk Map?*

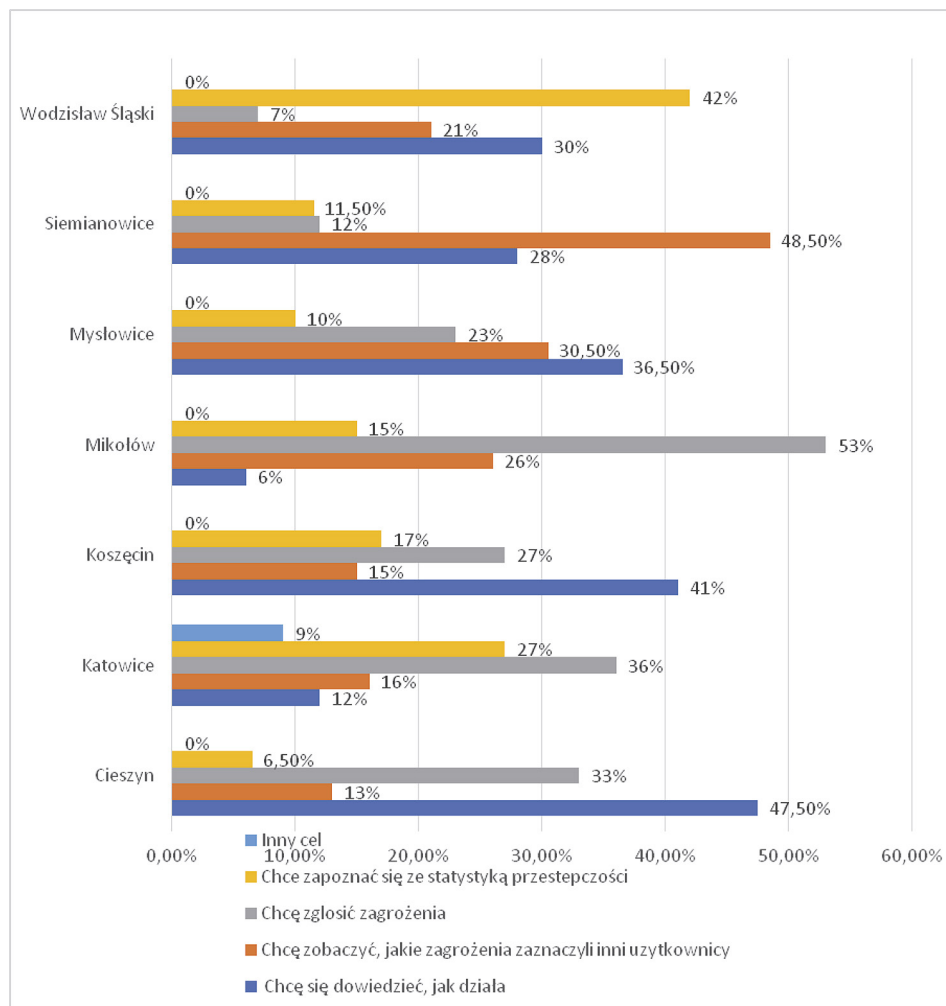


## Purpose of visiting the National Safety Risk Map website

The answer *"I want to find out how the National Safety Risk Map works"* to the question regarding the purpose of visiting the National Risk Map website was given by almost half of the respondents in Cieszyn (47.5%), slightly less in Koszęcin (41%), and then in Mysłowice (36.5%) and Wodzisław Śląski (30%). The smallest groups of respondents visit the Map to find out how it works in Siemianowice (28%), Katowice (12%) and Mikołów (6%). As the respondents also use the National Safety Risk Map to see what kind of threats other users have reported, it should be noted that almost half of the surveyed in Siemianowice Śląskie (48.5%) visit the Map for this purpose, almost one third of the residents of Mysłowice (30, 5%), a few percentage points less of the respondents of Mikołów (26%), slightly more than one fifth of the respondents from Wodzisław Śląski (21%), and the fewest of the respondents visit the Map in order to see the threats reported by other users in Katowice (16%), Koszęcin (15%) and Cieszyn (13%). In Mikołów more than half of the users of the Map (53%) use it to report a threat, in Katowice it is just over a third (36%), one third (33%) in Cieszyn, just over a quarter (27%) in Koszęcin and just under a quarter (23%) in Mysłowice. In Siemianowice only 12% of respondents use the Map to report a threat, and in Wodzisław Śląski it is only 7% of respondents. However, 42% of respondents in Wodzisław Śląski, 27% in Katowice, 17% in Koszęcin, 15% in Mikołów, 11.5% in Siemianowice, 20% in Mysłowice and 6.5% in Cieszyn use the Map to learn about crime statistics. Only 9% of the residents of Katowice visit the Map for other purposes. In each of the other cities, i.e. Cieszyn, Koszęcin, Mikołów, Mysłowice, Siemianowice and Wodzisław Śląski, none of the respondents indicated that they visited the Map for other purposes.

Table 3. Answers to the question *For what purpose do you visit the National Safety Risk Map?*

	I want to find out how it works	I want to see the threats reported by other users	I want to report a threat	I want to see the crime statistics	Another purpose
Cieszyn	47.5%	13%	33%	6.5%	0%
Katowice	12%	16%	36%	27%	9%
Koszęcin	41%	15%	27%	17%	0%
Mikołów	6%	26%	53%	15%	0%
Mysłowice	36.5%	30.5%	23%	10%	0%
Siemianowice	28%	48.5%	12%	11.5%	0%
Wodzisław Śl.	30%	21%	7%	42%	0%



Inny cel – Another purpose; Chce zapoznać się ze statystyką przestępczości – I want to learn about crime statistics; Chce zgłosić zagrożenia – I want to report threats; Chce zobaczyć, jakie zagrożenia zaznaczyli inni użytkownicy – I want to see what kind of threats other users have reported; Chce się dowiedzieć, jak działa – I want to find out how it works

Graph 3. Answers to the question For what purpose do you visit the *National Safety Risk Map*?

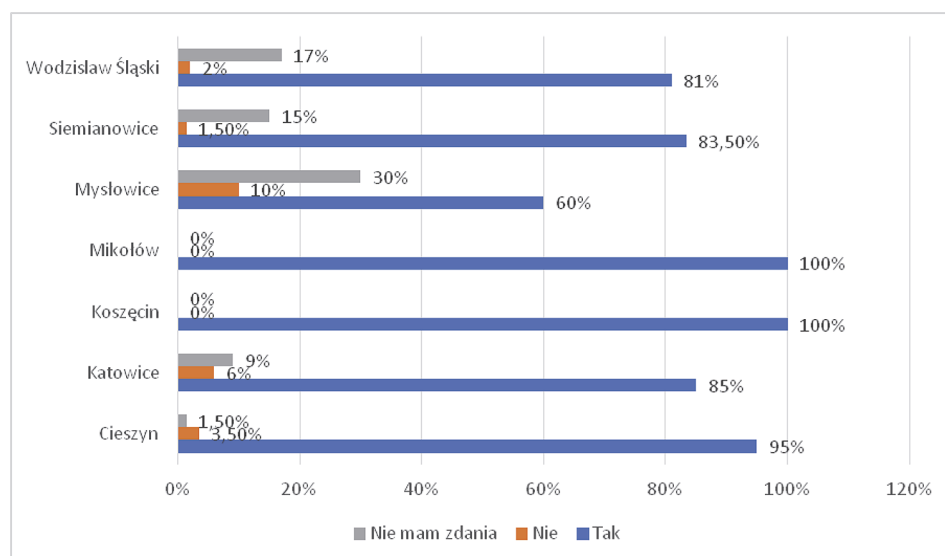
## Positive and negative features of the National Safety Risk Map

The statement *The positive features of the National Safety Risk Map are its universality, free access, ease of use and speed of information transfer* has therefore met with approval of all respondents in Koszęcin and Mikołów, 95% in Cieszyn,

83.5% in Siemianowice, 85% in Katowice, 81% in Wodzisław Śląski and 60% in Mysłowice. 10% of respondents from Mysłowice, 6% from Katowice, 3.5% from Cieszyn, 2% from Wodzisław Śląski and 1.5% from Siemianowice did not agree with this statement. None of the respondents in Koszęcin and Mikołów chose the answer that they disagree with this statement. 30% of respondents from Mysłowice, 17% from Wodzisław Śląski, 15% from Siemianowice, 9% from Katowice, 1.5% from Cieszyn have no opinion on this issue. None of the respondents in Koszęcin and Mikołów chose the answer that they have no opinion on this issue.

Table 4. Response to the statement *The positive features of the National Safety Risk Map are its universality, free access, ease of use and speed of information transfer*

	Yes	No	I have no opinion
Cieszyn	95%	3.5%	1.5%
Katowice	85%	6%	9%
Koszęcin	100%	0%	0%
Mikołów	100%	0%	0%
Mysłowice	60%	10%	30%
Siemianowice	83.5%	1.5%	15%
Wodzisław Śl.	81%	2%	17%



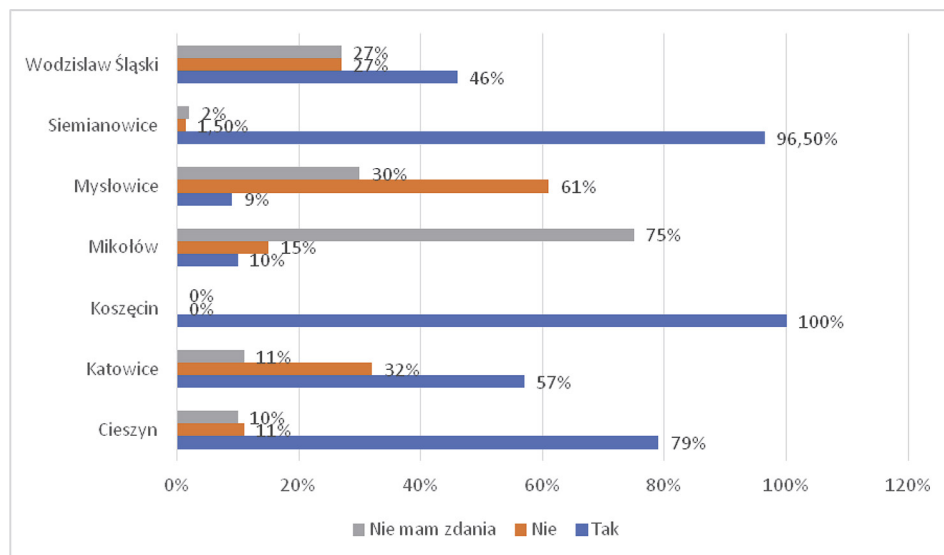
Nie mam zdania – I have no opinion; Nie – No; Tak – Yes

Graph 4. Response to the statement *The positive features of the National Safety Risk Map are its universality, free access, ease of use and speed of information transfer*

Subsequently the participants responded to the statement: *The negative features of the National Safety Risk Map are the insufficient “capacity” of the electronic transmission of information, the necessity to have a computer or other device with Internet access, lack of individual response.* The statement *The negative features of the National Safety Risk Map are the insufficient “capacity” of the electronic transmission of information, the necessity to have a computer or other device with Internet access, lack of individual response* has met with approval of all respondents from Koszęcin, 96.5% of the respondents from Siemianowice, 79% from Cieszyn, 57% from Katowice, 46% from Wodzisław Śląski, 10% from Mikołów and 9% from Mysłowice. 61% of respondents from Mysłowice, 32% from Katowice, 27% from Wodzisław Śląski, 15% from Mikołów, 11% from Cieszyn and 1.5% from Siemianowice did not agree with this statement. None of the respondents in Koszęcin chose the answer that they disagree with this statement. 75% of respondents from Mikołów, 30% from Mysłowice, 27% from Wodzisław Śląski, 11% from Katowice, 20% from Cieszyn and 2% from Siemianowice have no opinion on this issue. None of the respondents in Koszęcin chose the answer “I have no opinion”.

Table 5. Response to the statement *The negative features of the National Safety Risk Map are the insufficient “capacity” of the electronic transmission of information, the necessity to have a computer or other device with Internet access, lack of individual response.*

	Yes	No	I have no opinion
Cieszyn	79%	11%	10%
Katowice	57%	32%	11%
Koszęcin	100%	0%	0%
Mikołów	10%	15%	75%
Mysłowice	9%	61%	30%
Siemianowice	96.5%	1.5%	2%
Wodzisław Śl.	46%	27%	27%



Nie mam zdania – I have no opinion; Nie – No; Tak – Yes

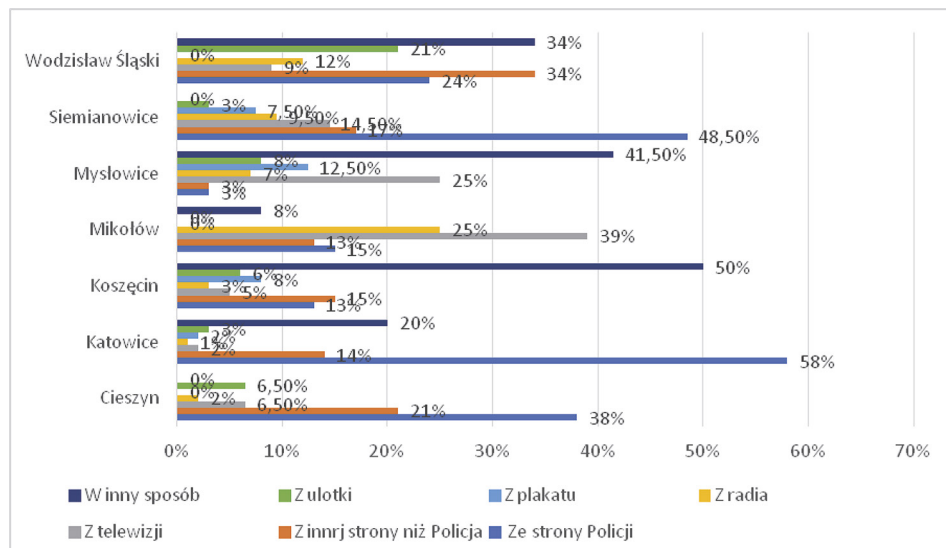
Graph 5. Response to the statement *The negative features of the National Safety Risk Map are the insufficient "capacity" of the electronic transmission of information, the necessity to have a computer or other device with Internet access, lack of individual response.*

## Source of information about the National Safety Risk Map

The website of the Police is the source of information about the National Safety Risk Map for more than half of the respondents in Katowice (58%), almost half of the respondents in Siemianowice, 38% in Cieszyn, almost a quarter of the residents of Wodzisław Śląski (24%), 15% in Mikołów, 13% in Koszęcin and only 3% in Mysłowice. The respondents of Wodzisław Śląski (34%), Cieszyn (21%), Siemianowice (17%), Koszęcin (15%) learn about the functioning of the National Safety Risk Map from a website other than that of the Police. The smallest percentage of respondents who learned about the Map from a website other than that of the Police was in Katowice (14%), Mikołów (13%) and only 3% in Mysłowice. Television is a source of information about the National Safety Risk Map for a quarter of respondents in Mikołów, 14.5% in Siemianowice, 12% in Wodzisław Śląski, 7% in Mysłowice, 6.5% in Cieszyn and only 3% in Koszęcin and 2% in Katowice. One quarter of respondents in Mikołów, 12% in Wodzisław Śląski, 9.5% in Siemianowice, 7% in Mysłowice and only 3% in Koszęcin, 2% in Cieszyn and 1% in Katowice learn about the National Safety Risk Map from the radio. A poster, on the other hand, is a source of information for only 12.5% of respondents in Mysłowice, 8% in Koszęcin, 7.5% in Siemianowice and 2% in

Table 6. Answers to the question *How did you find out about the National Safety Risk Map?*

	From the Police's website	From a website other than that of the Police	From television	From radio	From a poster	From a leaflet	From another source
Cieszyn	38%	21%	6.5%	2%	0%	6.5%	0%
Katowice	58%	14%	2%	1%	2%	3%	20%
Koszęcin	13%	15%	5%	3%	8%	6%	50%
Mikołów	15%	13%	39%	25%	0%	0%	8%
Mysłowice	3%	3%	25%	7%	12.5%	8%	41.5%
Siemianowice	48.5%	17%	14.5%	9.5%	7.5%	3%	0%
Wodzisław Śl.	24%	34%	9%	12%	0%	21%	34%



W inny sposób – From another source; Z ulotki – From a leaflet; Z plakatu – From a poster; Z radia – From radio; Z telewizji – From television; Z innej strony niż policja – From a website other than that of the Police; Ze strony policji – From the Police's website

Graph 6. Answers to the question *How did you find out about the National Safety Risk Map?*

Katowice. None of the respondents learned about the National Safety Risk Map this way in Cieszyn, Mikołów and Wodzisław Śląski. Slightly more than one fifth (21%) of the respondents of Wodzisław Śląski and only 8% of the respondents of Mysłowice, 6.5% of the respondents of Cieszyn, 6% of the respondents of Koszęcin learn about the Map from a leaflet. It was a source of information for

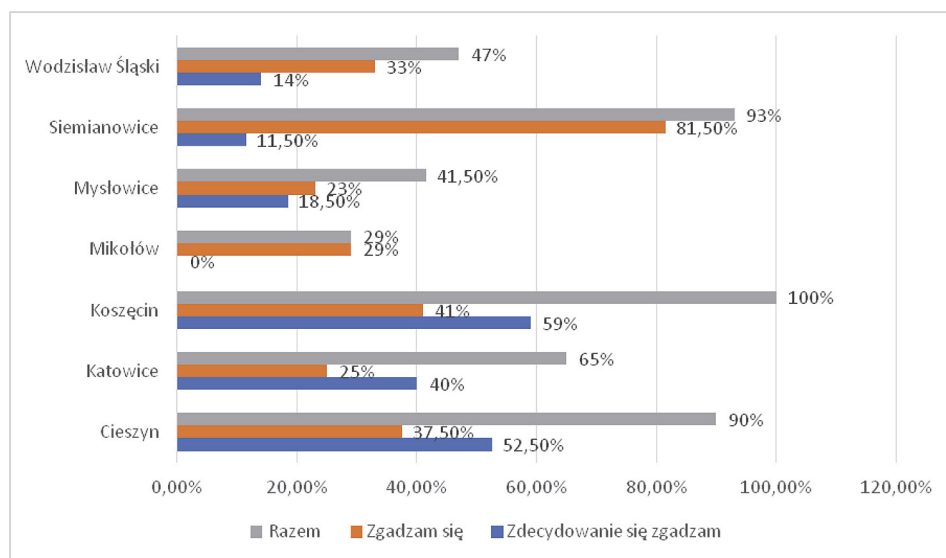
the same percentage (3%) of the residents of Katowice and Siemianowice, but no respondents from Mikołów found out about the Map this way. Half of the respondents in Koszęcin, 41.5% in Mysłowice, 34% in Wodzisław Śląski, 20% in Katowice and only 8% in Mikołów learn about the Map in a different way. None of the respondents in Cieszyn and Siemianowice learned about the Map from other sources.

## **The impact of the National Safety Risk Map on increasing the sense of security**

Respondents were asked the question *Do you think the National Safety Risk Map will increase the sense of security of citizens*. More than half of the respondents from Koszęcin (59%) strongly agree that the National Safety Risk Map will increase the sense of security of citizens, as do 52.5% of respondents from Cieszyn, 40% from Katowice, 18.5% from Mysłowice, 14% from Wodzisław Śląski and 11.5% from Siemianowice. None of the participants in Mikołów strongly disagreed that the National Safety Threats Map will increase the sense of security of citizens. More than three quarters of the respondents in Siemianowice (81.5%), 41% of respondents in Koszęcin, 37.5% in Cieszyn, 33% in Wodzisław Śląski, 29% in Mikołów, 25% in Katowice and 23% in Mysłowice agree that the National Safety Risk Map will increase the sense of security of citizens. Less than one third of the participants in all cities rather disagree that the National Safety Risk Map will increase the sense of security of citizens, in particular 32% of the respondents in Mikołów, 24% in Katowice, 17% in Wodzisław Śląski, 11% in Mysłowice, 4.5% in Cieszyn and 1% in Siemianowice. None of the participants in Koszęcin rather disagreed that the National Safety Risk Map will increase the sense of security of citizens. Less than 10% of the respondents strongly disagree that the National Safety Risk Map will increase the sense of security of citizens, in particular: 5% in Katowice and Mysłowice, 1.5% in Siemianowice. None of the participants in Cieszyn, Koszęcin, Mikołów and Wodzisław Śląski strongly disagreed that the National Safety Risk Map will increase the sense of security of citizens. The answer "Hard to say" was given by almost half (46.5%) of the respondents in Mysłowice, 39% in Mikołów, 31% in Wodzisław Śląski, 6% in Katowice, 5.5% in Cieszyn, 4.5% in Siemianowice, and none of the respondents in Koszęcin gave the answer "Hard to say".

Table 7. Answers to the question *Do you think the National Safety Risk Map will improve the effectiveness of the Police?*

	I strongly agree	I agree	Total
Cieszyn	52.5%	37.5%	90%
Katowice	40%	25%	65%
Koszęcin	59%	41%	100%
Mikołów	0%	29%	29%
Mysłowice	18.5%	23%	41.5%
Siemianowice	11.5%	81.5%	93%
Wodzisław Śl.	14%	33%	47%



Razem – Total; Zgadzam się – I agree; Zdecydowanie się zgadzam – I strongly agree

Graph 7. Answers to the question *Do you think the National Safety Risk Map will improve the effectiveness of the Police?*

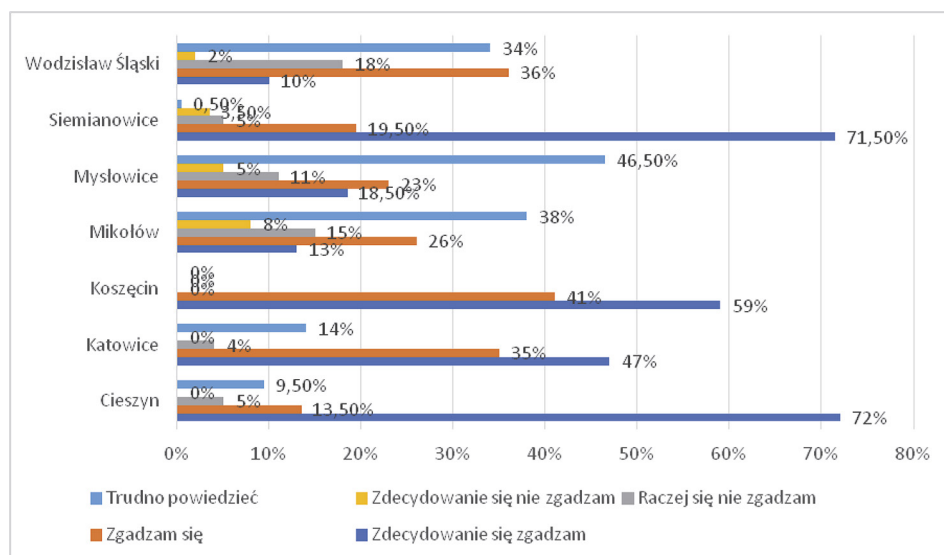
## The impact of the National Safety Risk Map on the effectiveness of the Police

Respondents were asked *Do you think the National Safety Risk Map will improve the effectiveness of the Police?* The answer “I strongly agree” was given by almost three quarters of respondents from Cieszyn (72%), 71.5% from Siemianowice, 59% from Koszęcin. Less than half of the respondents strongly agreed that the National Safety Risk Map will improve the effectiveness of the Police in Katowice (47%), Mysłowice (18.5%), Mikołów (13%) and Wodzisław Śląski (10%). The



Table 8. Answers to the question *Do you think the National Safety Risk Map will improve the effectiveness of the Police?*

	I strongly agree	I agree	I rather disagree	I strongly disagree	Hard to say
Cieszyn	72%	13.5%	5%	0%	9.5%
Katowice	47%	35%	4%	0%	14%
Koszęcin	59%	41%	0%	0%	0%
Mikołów	13%	26%	15%	8%	38%
Mysłowice	18.5%	23%	11%	5%	46.5%
Siemianowice	71.5%	19.5%	5%	3.5%	0.5%
Wodzisław Śl.	10%	36%	18%	2%	34%



Trudno powiedzieć – Hard to say; Zdecydowanie się nie zgadzam – I strongly disagree; Raczej się nie zgadzam – I rather disagree; Zgadzam się – I agree; Zdecydowanie się zgadzam – I strongly agree

Graph 8. Answers to the question *Do you think the National Safety Risk Map will improve the effectiveness of the Police?*

answer “I agree” was given by less than half of the participants in all cities, in particular: in Koszęcin (41%), Wodzisław Śląski (36%), Katowice (35%), Mikołów (26%), Mysłowice (23%), Siemianowice (19.5%) and Cieszyn (13.5%). Less than 20% of those surveyed in all cities said that they rather disagree, in particular: 18% in Wodzisław Śląski, 15% in Mikołów, 11% in Mysłowice, the same percentage (5%) in Cieszyn and Siemianowice, 4% in Katowice and none of the respondents in Koszęcin. The answer “I strongly disagree” was given by less

than 10% of respondents in all cities, in particular: in Mikołów 8%, Siemianowice Śląskie 3.5% and Wodzisław Śląski 2%. None of the respondents strongly agreed that the National Safety Risk Map will improve the effectiveness of Police in Cieszyn, Katowice, Koszęcin and Mysłowice. The answer “Hard to say” was given by almost half of the respondents in Mysłowice (46.5%), 38% in Mikołów, 34% in Wodzisław Śląski, 14% in Katowice, 9.5% in Cieszyn and 9.5% in Siemianowice. None of the respondents chose this answer in Koszęcin.

## Conclusions

The National Safety Risk Map indicated that partnership is the best way to build security. The dialog between the Police and local communities via the National Safety Risk Map is an activity that builds public awareness in terms of responsibility for the state of security in local communities, which leads to the creation of a sustainable partnership for security that enables locating, identifying and eliminating crime-inducing factors before they escalate.

The research has shown that the Map is a modern tool which strengthens the sense of security in local communities. For it to function, this tool requires a dialog between the Police and the citizen and this is what its value is all about. The citizens are aware of their influence on their own sense of security.

It is important to stress the need for continuous evaluation of the functioning of the National Safety Risk Map by its users in individual cities, voivodships and across the country. That is because it allows to improve conducting the dialog for internal security with the Police. In this way, the need for cooperation between the Police and the world of science in terms of regular research on the assessment of the functioning of the National Safety Risk Map by its users should be highlighted. The map is a modern tool, useful and strengthening the sense of security in local communities. At the same time, the informational activities concerning it should be intensified so that a larger percentage of citizens are aware of the existence and functioning of such a tool. The Map requires joint actions of the Police and local communities. Active exchange of information, dialog on the level of the Police – residents is constantly bringing positive effects. It should be stressed that the consequence of creating the platform is the strengthening of trust between a given Police unit and the local community.

## References

- [1] Głodziński M., Kłys A., 2017, *Wyniki sondażu, „Policja 997”*, wydanie specjalne.
- [2] Klonowska I., 2017, *Klimat społeczny polskiej Policji: wybrane zagadnienia*, Wydawnictwo WIR, Warszawa–Kraków.

- [3] Klonowska I., 2018, *Uspołecniające, profilaktyczne i resocjalizacyjne funkcje Policji w perspektywie współczesnej pedagogiki resocjalizacyjnej*, Oficyna Wydawnicza „Impuls”, Kraków.
- [4] Klonowska I., Stawnicka, 2017, *Partnerstwo służb dzielnicowych ze społecznością lokalną na rzecz bezpieczeństwa wewnętrznego z perspektywy działań społeczno-wychowawczych*, Warszawa.
- [5] Klonowska I., Stawnicka J., 2020, Budowanie świadomości społecznej w zakresie odpowiedzialności za stan bezpieczeństwa w społecznościach lokalnych z perspektywy funkcjonowania Krajowej Mapy Zagrożeń Bezpieczeństwa – Ocena postrzegania KMZB przez użytkowników (Wydawnictwo Wyższej Szkoły Policji w Szczytnie, w druku).
- [6] Maciejczak P., 2016, *Krajowa Mapa Zagrożeń Bezpieczeństwa w Polsce*, „Policja 997”, nr 7.
- [7] Maciejczak P., 2017, *Polacy ufają Krajowej Mapie Zagrożeń Bezpieczeństwa*. Rozmowa z Jarosławem Zielińskim, sekretarzem stanu w Ministerstwie Spraw Wewnętrznych i Administracji, „Policja 997”, wyd. specjalne, nr 9.
- [8] Minkiewicz D., 2017, *Funkcje Krajowej Mapy Zagrożeń Bezpieczeństwa w kształtowaniu bezpieczeństwa społeczności lokalnej*, „Kwartalnik Policyjny”, nr 3.
- [9] Polończyk A., 2017, *Zagrożenia bezpieczeństwa informacyjnego na przykładzie Krajowej Mapy Zagrożeń Bezpieczeństwa*, [w:] *Bezpieczeństwo informacyjne w dyskursie naukowym*, (red.) H. Batorowska, E. Musiał, Wydawnictwo Uniwersytetu Pedagogicznego w Krakowie, Kraków.
- [10] Stawnicka J., 2013, *Dialogiczny wymiar bezpieczeństwa. Rzecz o polskiej Policji*, Wydawnictwo Uniwersytetu Śląskiego, Katowice.
- [11] Stawnicka J., Klonowska I., 2017, *Rola dzielnicowego w nowoczesnej formacji policyjnej z perspektywy działań edukacyjno-wychowawczych i profilaktycznych w społecznościach lokalnych*, Warszawa.
- [12] Stawnicka J., Klonowska I., 2018a, *Krajowa Mapa Zagrożeń Bezpieczeństwa nową formą dialogu polskiej Policji ze społecznością lokalną na rzecz bezpieczeństwa wewnętrznego – w aspekcie społeczno-pedagogicznym*, Oficyna Wydawnicza „Humanitas”, Sosnowiec.
- [13] Stawnicka J., Klonowska I., 2018b, *Projekt Dialog Policji ze społeczeństwem z perspektywy funkcjonowania Krajowej Mapy Zagrożeń Bezpieczeństwa*, [w:] Stawnicka J., Klonowska I., *Świat nauki dla Policji – Policja dla społeczeństwa: synergiczny efekt współpracy Policji ze światem nauki – ujęcie wieloaspektowe*, Oficyna Wydawnicza „Humanitas”, Sosnowiec, s. 82–92.